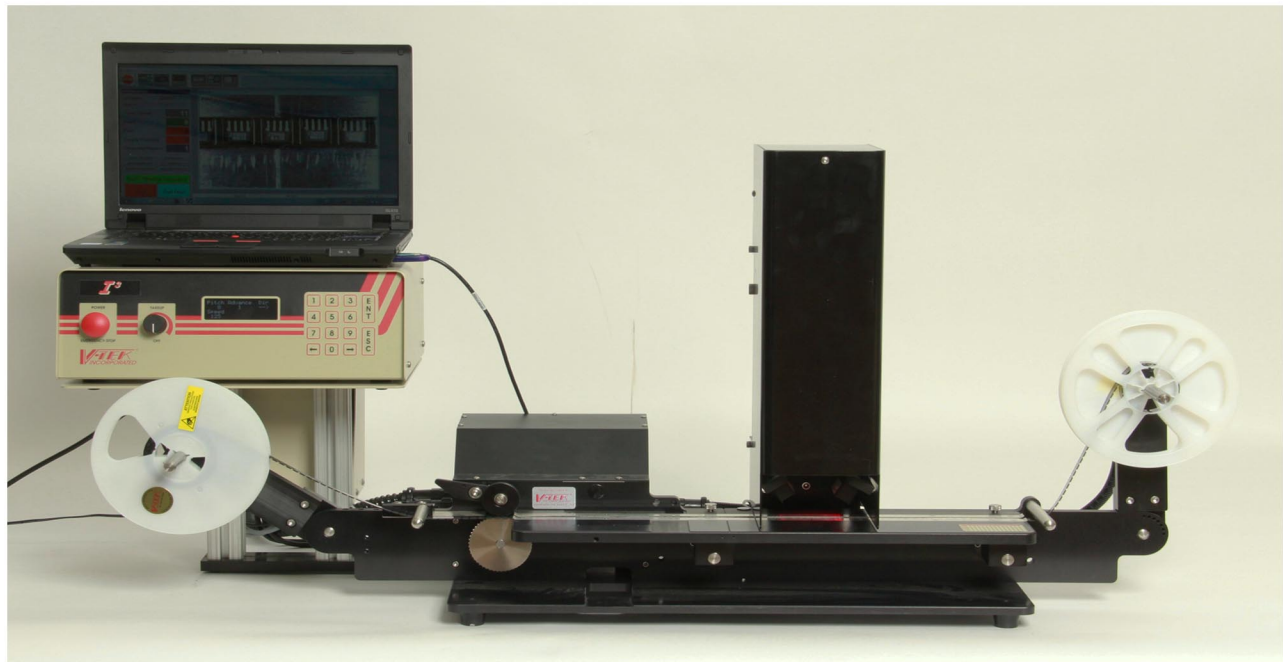


I³ SMD In-Tape Inspection Station provides innovative orientation detection and mark inspection for precision parts.

V-TEK's I³ introduces unprecedented setup ease and extraordinary range of performance benefits. The I³ is able to inspect small or large parts with only a matter of minor adjustment, within a 52 mm mark area and no camera/optics adjustment for all marks with a stroke width above 125 microns and up to a 30 mm mark.

The I³ offers highly customized reporting and tracking solutions, including available user defined fields, track lot and reel numbers, and automatic reporting at the end of the lot.



***CE certification pending **Netbook is optional

FEATURES:

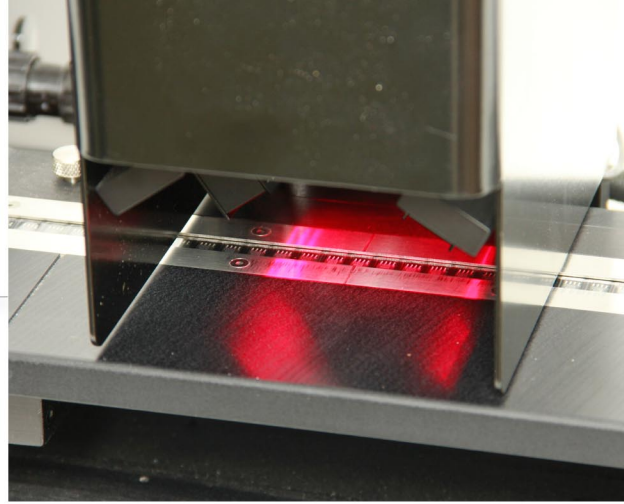
- Through-cover-tape inspection of orientation and/or mark
- Reports rejected parts, empty pockets, and total passing parts
- Immediate fail mode (programmable option)
- Upon verification of first fail in the reel, lot will close and the reel will be rewound
- Reject report will be saved for supplier feedback
- User-friendly software assures ease of set-up and operation
- Customized reporting with up to two user-defined fields and ability to save first passing part image on report



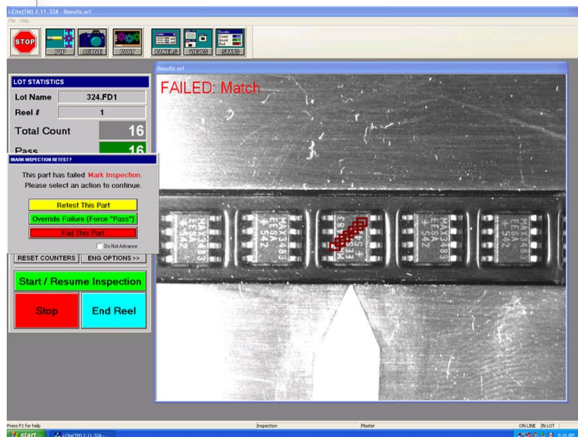
V-TEK , Incorporated
 751 Summit Avenue
 Mankato, MN 56001
 (P) 507 387 2039
 (F) 507 387 2257

www.vtekusa.com

V i s i o n V e r i f i c a t i o n



- Multiple reel sizes (7" and 13" reels), tape widths up to 72 mm, pitch from 2-144 mm
- Part sizes up to 1" X 1" (25.4 mm X 25.4 mm) with no camera adjustment
- Dimensions: height 12" (30 cm), width 30" (76 cm), depth 16" (40 cm)
- Power required: 120/230 VAC 50/60 Hz
- Weight: 14.5 lbs (6.4 Kg)



V-TEK , Incorporated
751 Summit Avenue
Mankato, MN 56001
(P) 507 387 2039
(F) 507 387 2257